

THE EVOLUTION OF HUMAN EXPERIENCE EXPLORING THE INTER PLAY OF EMOTIONS, COGNITION, CULTURE AND TECHNOLOGY IN SHAPING HUMAN BEHAVIOUR

G. Logashankari

PGT Computer Application, Jairam Higher Secondary School, Chinnathirupathi, Salem – 636008, India

Received: 20 Nov 2025

Accepted: 24 Nov 2025

Published: 26 Nov 2025

ABSTRACT

This paper examines the intricate relationships between human emotions, cognition, culture, and technology, investigating how these factors intersect to influence human behavior in the digital age. We explore how technology shapes human interactions, emotional regulation, and decision-making processes, while also considering the cultural and social implications of technological advancements. By synthesizing insights from psychology, anthropology, philosophy, and computer science, this research provides a nuanced understanding of the complex dynamics underlying human-technology interactions. Our findings highlight the need for a multidisciplinary approach to understanding human experience, acknowledging the profound impact of technology on human behavior and society.

KEYWORDS: Human Emotions & Human Behavior

INTRODUCTION

We live in the age of information Technology. The Mobile Phones have literally put the world on our finger tips. The all encompassing knowledge that we possess now, which has helped in the development of powerful technology, did not emerge all of a sudden. The foundation of our modern life was facilitated by the development of the process of cognition among the human ancestors in the prehistoric age. Prehistoric people were the pioneers of creative knowledge from the artifacts and the languages they developed; we are able to understand how intelligent they were.

Definition: Human

Humans are scientifically known as Homosapiens, are primates that belong to the biological family of great apes and are characterized by hairlessness, bipedality and its high intelligence. It is a word comes from Latin humanus, it's a hybrid relative of homo, meaning "man", and humus, meaning "earth".

Technology

Technology means it is an application of scientific knowledge to the practical aims of human life.

MEANING OF HUMANOLGY

The term "Humanology" refers to human and Technology. Here technology can Aid human life or industries to survive.

How Human and Technology Can Works?

The relationship between Technology and society is reciprocal. Society drives technological changes while changing in technologies turn to shape human and the society. But in technological decisions we should take into account both costs and benefits.

HUMAN EVOLUTION AND MIGRATION

The ancestors of the humans were called hominins and their origins have been traced in Africa. The Hominers emerged around 1 to 5 million years ago.

Eg. The Great Rift valley in Africa has many sites that have evidence for the prehistoric period.

Human ancestors are divided into various species according to their physical feature

- Hominid
- Hominis
- Homo habitis
- Homo erectors
- Neanderthalensis

Migration Influence the Development of Human Life

From the early times till now migration has been taking place. This happens in the form of “searching for their food, job, Occupation, Education, Marriage, employment moved with household and other rearous.

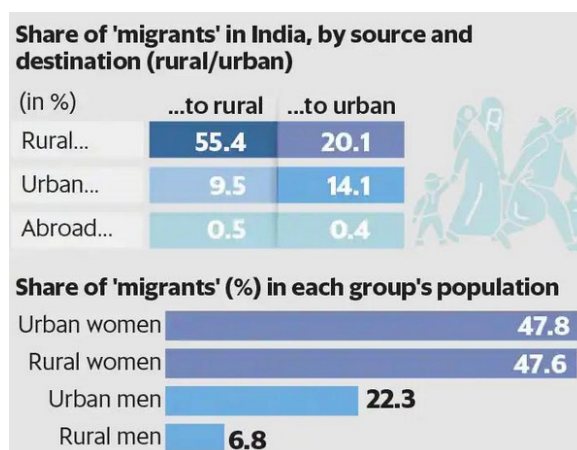


Figure 1

How Computer Comes into the Human Life?

Computers are seen everywhere around us, in all sphere of life, in the field of education, research, travel and tourism, weather forecasting, social networking ecommerce etc., Computers have now become on indispensable part of our liver with their accuracy and speed of performing a job, it is truly remarkable. Today no organization can function without a computer. Computers have evolved over the years from a simple calculating devices to high speed portable Computers.

The Manual method of computing was slow and prone to errors. In Order to avoid that so many attempts were made to develop the fast calculating process. The journey started from the first known calculating device was (abacus) As abacus is the mother of calculating devices which paved way for many technological invention.

How Human Adapted to Technology?

Due to the civilization and urbanization humans are slowly learn to adapt with the technology. Technology is playing a vital role in the human life, in the mode of communication. Many devices like (Mobile Phone, Computer, tablets, and many electronic gadget) which makes the work more easier to the human. Due to the evolution of human the development taken place in the life of the human. Technology is playing a major role in the decision making power, cognitive thinking, communication of the human. Through Technology human can experience many things into his life is all aspects. More availability of technologies.



Figure 2

If has been Classified into

- Programming language
- Non-Programming Languages

Programming Knowledge which Act as a Backbone of Every Innovation they are:

- | | | |
|-------------------|------|--------------------|
| • COBOL | | Advancement in AI |
| • C Programming | - | Quantum Compulsory |
| • C++ Programming | - | Edge Computing |
| • Java | - | Robotics |
| • C# | | AR/VR |
| • PHP | - | Cyber Security etc |
| • AJAX | | |
| • HTML | | |
| • CSS | Etc. | |

Sensor devices, GPRS, GPS devices, currently AI is playing a human role widely in our world.

“The wise possess all” Anyone who is quick to identify and adopt innovation will be successful. Due to the innovation of the E-commerce Technology the customer can easily done their purchasing and trading for an organization also become more easies. In 1996, IBM coined the term E-Businnar as growth in technology and vest usage of Internet, our style of living has changed due to commercial trade

Hinderance of Traditional Commerce

In Traditional commerce mainly the physical stores are not feasible to be open at all times. The scope of business is limited to particular area. The Business relationship is linear and it is a One way Marketing and in early stage only barter system were followed.

Advantages of Modern E-Commerce Technology

Here E-Commerce carrier out commercial transactions electronically on the internet. It is always available on all time and all days of the year. Scope of business is global vendors can expand their business worldwide. Business Relationship is End to end and one to one marketing. Payment system can be done through credit card, debit card or fund transfer E-Commerce system is operated 24 x 7. E-commerce system paved way for the development of online payment, E Banking, online shopping like (Meesho, Myntra, Amazon, Flipkart etc.,)

Technology is Our Daily Life

From early morning and till the mid of night (24/7) of every second. A technology is driving a human from mobile phone, sanitary wardrobe, kitchen, Bathroom, In all living space and in the society. The Technology is playing a major role in our human life.

Major Application of Area where Technology Surviving:

In Hospitals, Government, Educational Institution, College, Banking, Rations Retail & Wholesale shops etc.

Maximum users of Computer

Now for any reference humans to assist with AI.

Eg. Chat GBT, Meta AI and so many AI Application has been launched to favour the human.

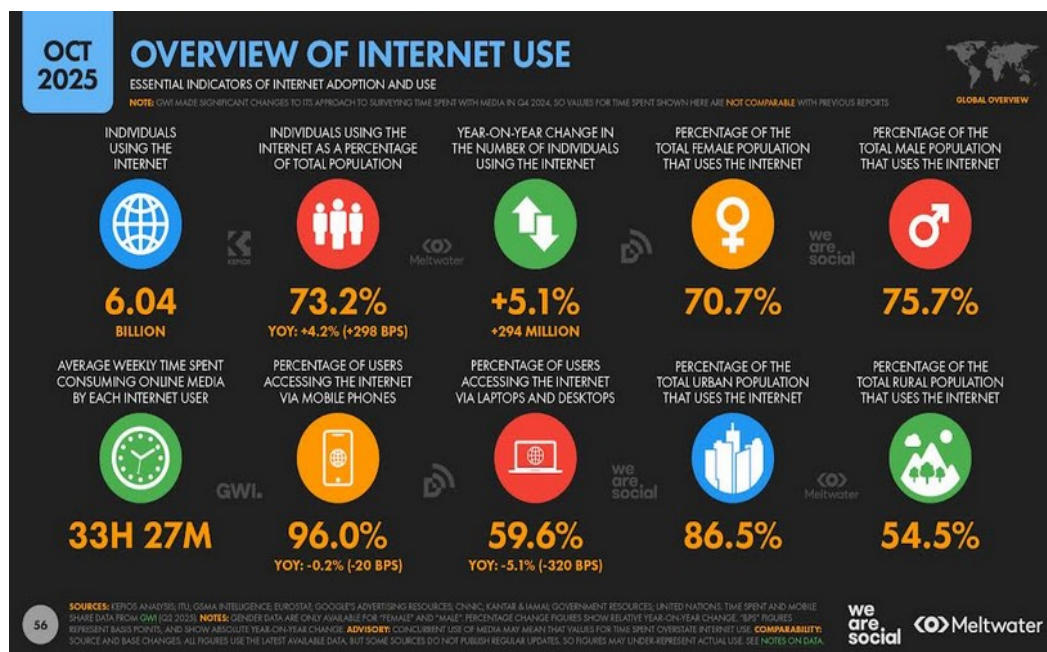


Figure 3

Suggestion of the Study

As we are growing in an overwhelmed rate of invention technology are only to a supporting materials of the human. Though human have invented every technology finally a Technology is rulling our world and human. As a human we should mind of creating a wide space for our growth rather than developing the technologies like AI. Which should not destroy the humanitarains of the society. A man should composed of all good qualities like empathy, kindness, humanity, love, care, affection etc.,

Finally Technology should not paved way for displacement of the human.

Digital around the World

A total of 6.04 billion people around the world were using the internet at the short of October 2025 and 5.66 billion we social media only 2.6 billion people were in offline user.

CONCLUSION

As we conclude this exploration of Humanology we are reminded of the urgent need for a human – centered approach to technology design and development. Let us work together to create a future where technology serves humanity.

As we continue to shape and are shaped by technology, let us prioritize empathies, compassion and understanding in our pursuit of innovation and program.

REFERENCES

1. *Self content*
2. *Referred class 9 social science Tamilnadu Educational samacheer book*
3. *Referred Class 11 & 12 computer application book*
4. <https://www.britannica.com>
5. <https://en.wikipedia.org>
6. <https://www.pinterest.com>
7. <https://indianexpress.com>
8. <https://www.merriam-webster.com>
9. <https://www.bbc.com>